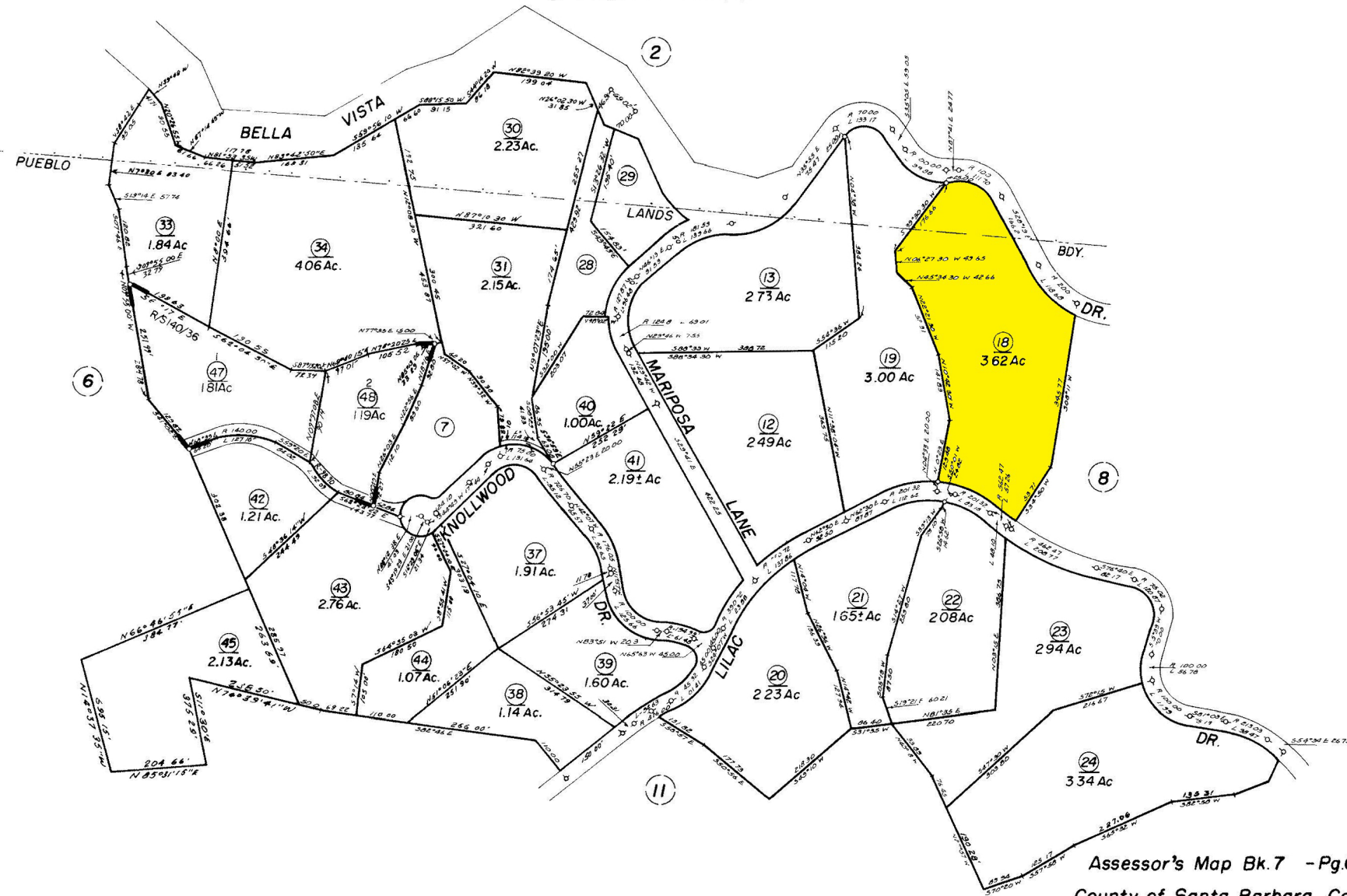
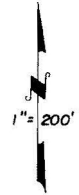


POR. N E ¼ SEC. 9, T. 4 N., R. 26 W., S. B. B. & M.
& PUEBLO LANDS

7-07



Assessor's Map Bk. 7 - Pg. 07
County of Santa Barbara, Calif.

NOTE - Assessor's Block Numbers Shown in Ellipses
Assessor's Parcel Numbers Shown in Circles

5/89 32x35 1/4 46
46 1/4 47x48

This map/plat is being furnished as an aid in locating the herein described Land in relation to adjoining streets, natural boundaries and other land, and is not a survey of the land depicted. Except to the extent a policy of title insurance is expressly modified by endorsement, if any, the Company does not insure dimensions, distances, location of easements, acreage or other matters shown thereon.