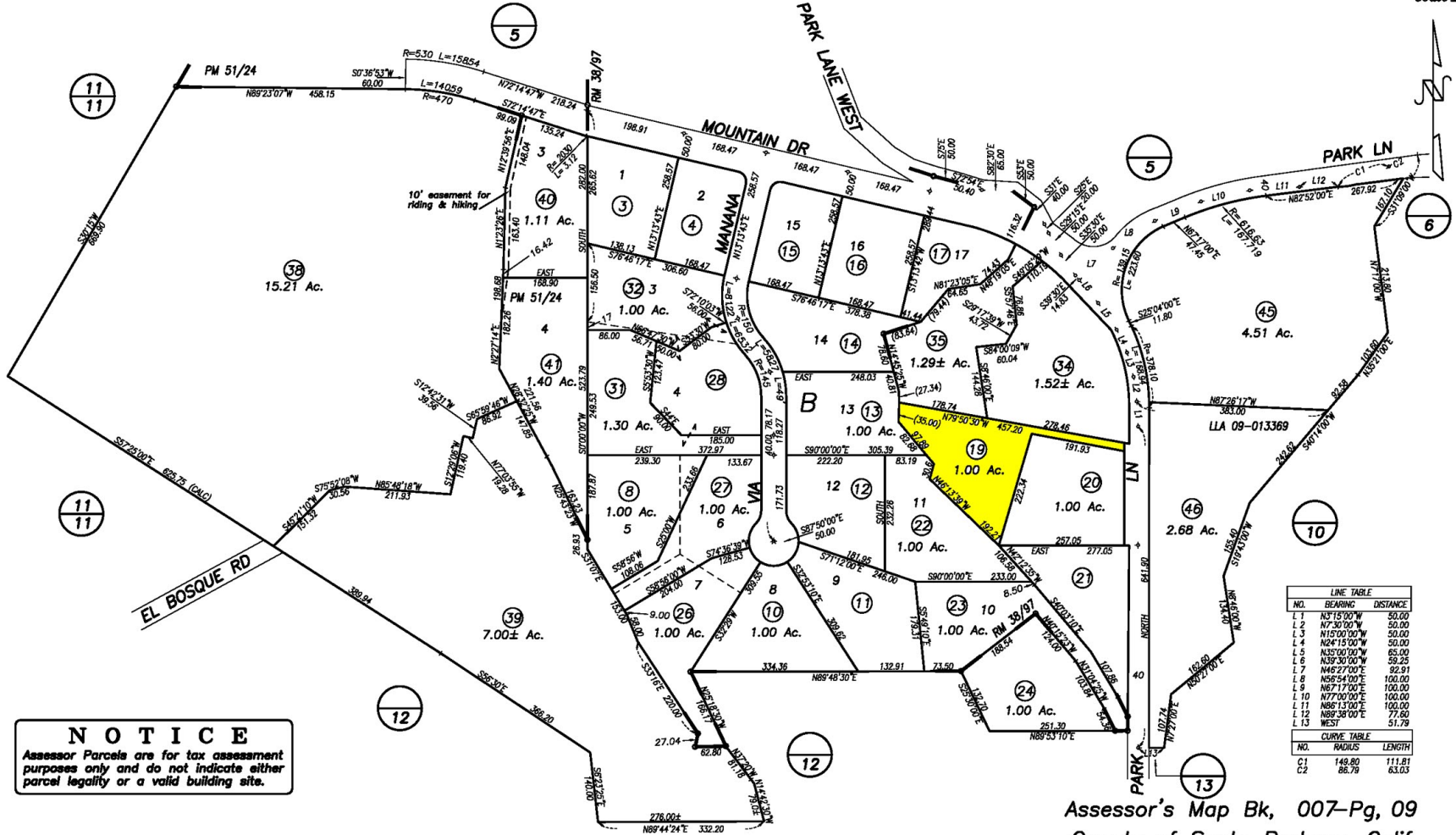


POR. PUEBLO LANDS

007-09

1" = 200'
scale ±



NOTICE
Assessor Parcels are for tax assessment purposes only and do not indicate either parcel legality or a valid building site.

LINE TABLE		
NO.	BEARING	DISTANCE
L 1	N31°15'00"W	50.00
L 2	N7°30'00"W	60.00
L 3	N15°00'00"W	50.00
L 4	N24°15'00"W	50.00
L 5	N35°00'00"W	65.00
L 6	N39°30'00"W	59.25
L 7	N49°27'00"	92.91
L 8	N55°54'00"E	100.00
L 9	N67°17'00"E	100.00
L 10	N77°00'00"E	100.00
L 11	N89°13'00"E	100.00
L 12	N89°38'00"E	77.60
L 13	WEST	51.79

CURVE TABLE		
NO.	RADIUS	LENGTH
C 1	149.80	111.81
C 2	86.79	63.03

Assessor's Map Bk, 007-Pg, 09
County of Santa Barbara, Calif.