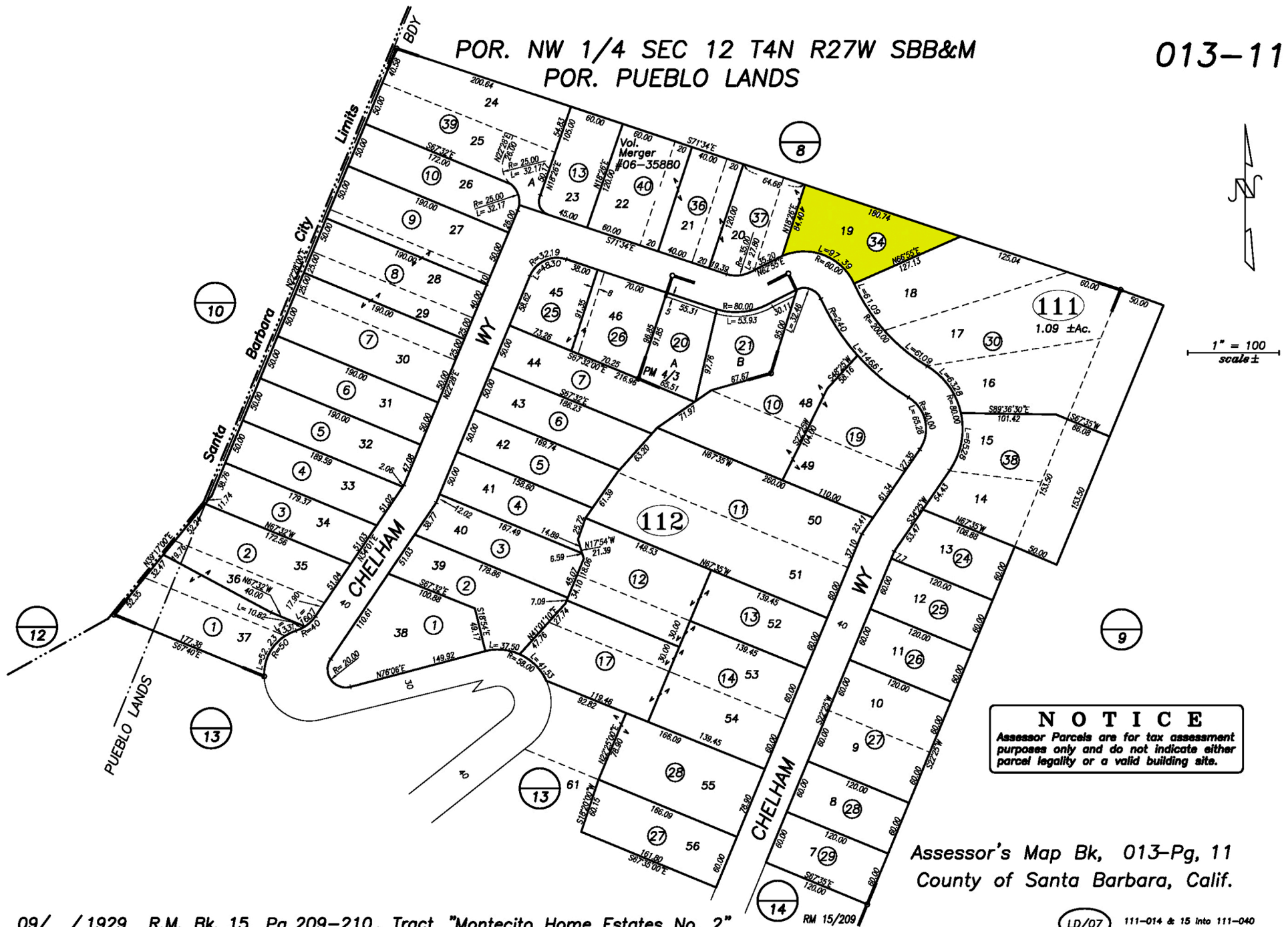


POR. NW 1/4 SEC 12 T4N R27W SBB&M
 POR. PUEBLO LANDS

013-11



NOTICE
 Assessor's Parcels are for tax assessment purposes only and do not indicate either parcel legality or a valid building site.

Assessor's Map Bk, 013-Pg, 11
 County of Santa Barbara, Calif.