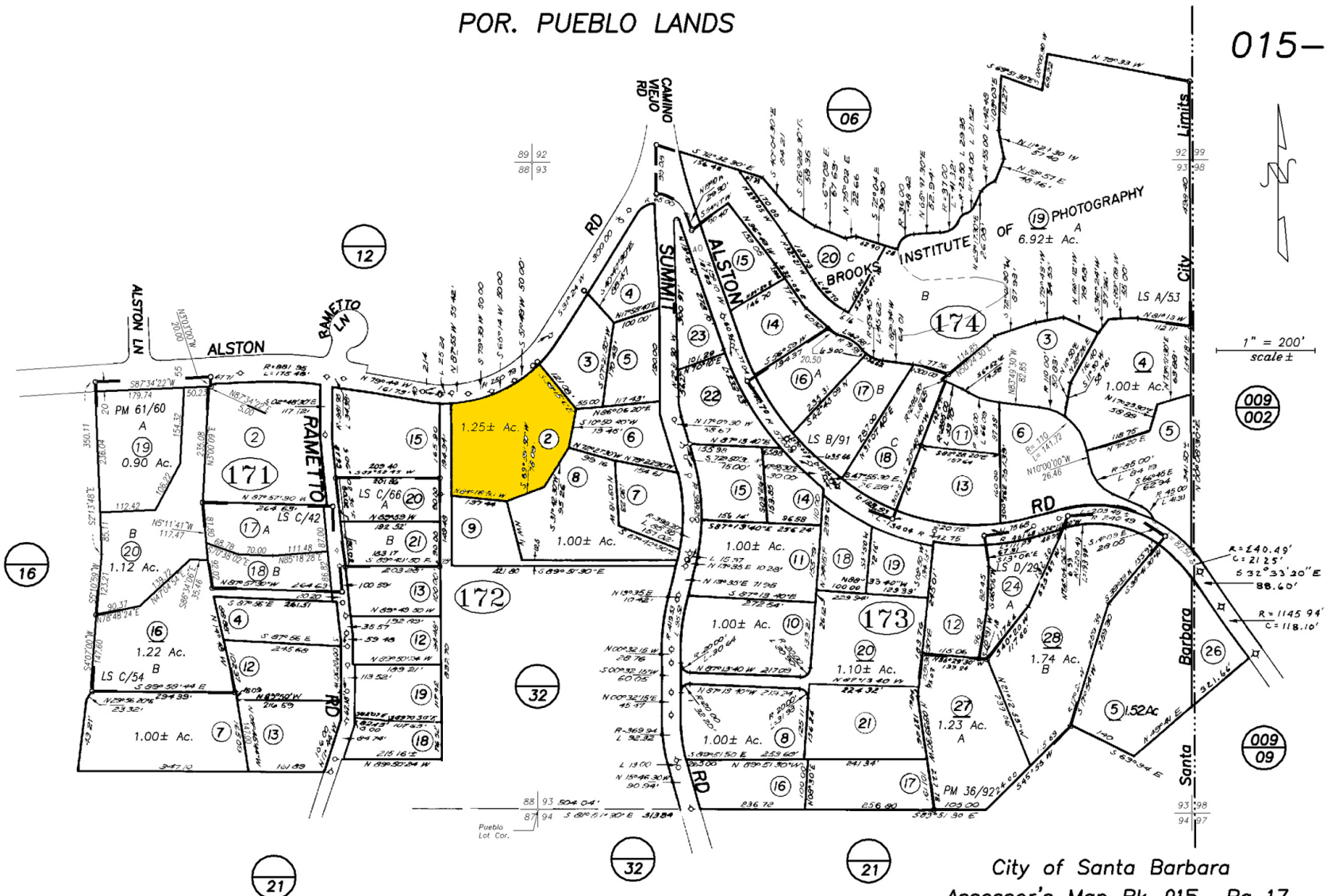


POR. PUEBLO LANDS

015-17



04/04/2008 R.M. Bk. 61 , Pg. 60-61 , Tract 20749

**NOTICE**  
 Assessor Parcels are for tax assessment purposes only and do not indicate either parcel legality or a valid building site.

City of Santa Barbara  
 Assessor's Map Bk, 015 -Pg, 17  
 County of Santa Barbara, Calif.

12/08 171-14 into 371-19 & 20