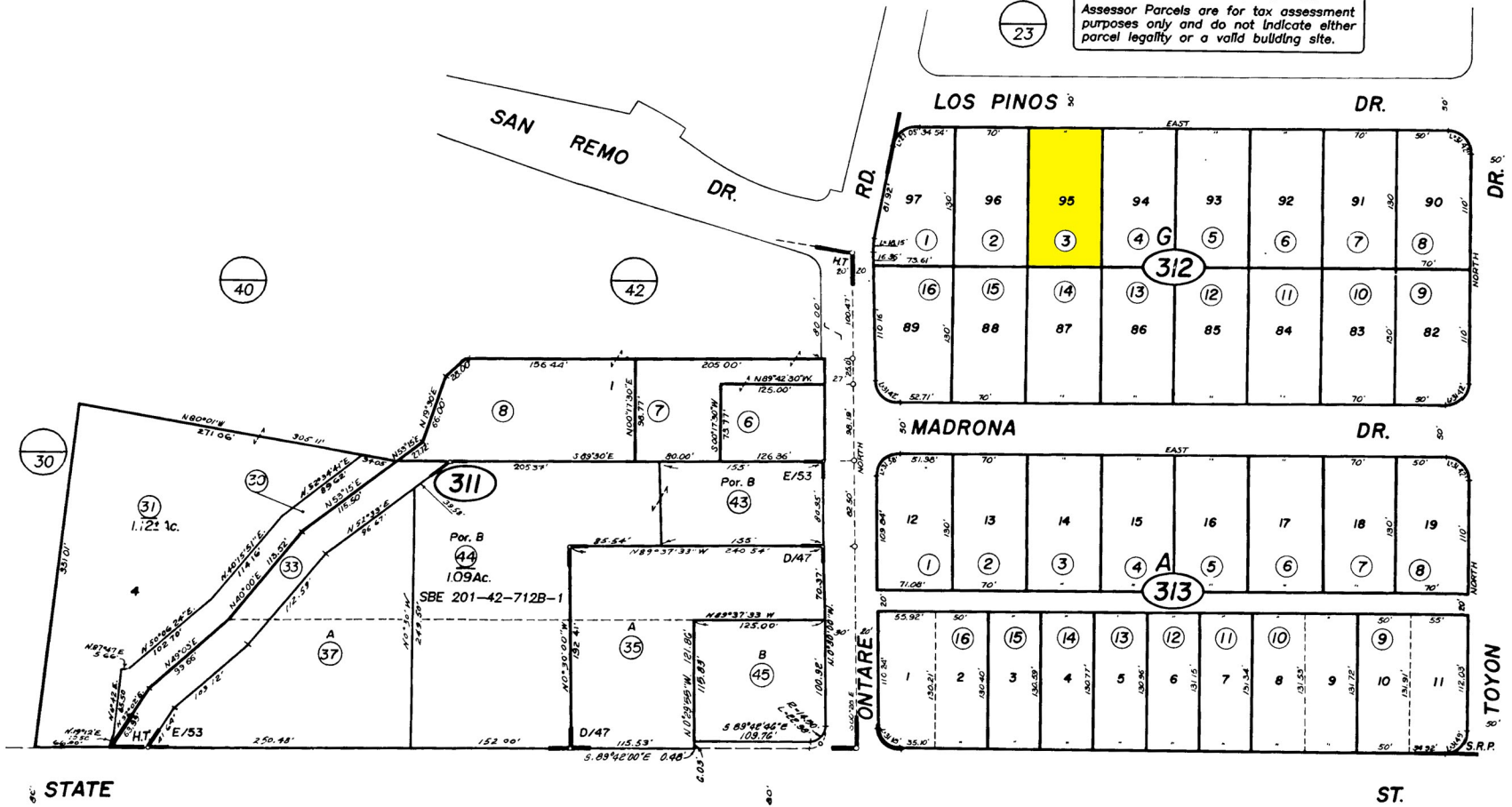


**NOTICE**  
 Assessor Parcels are for tax assessment purposes only and do not indicate either parcel legality or a valid building site.



STATE

ST.

06/20/1907 R.M. Bk. 4 , Pg. 50 , Tract Partition of Property of Mrs. C. M. Higby  
 03/30/1926 R.M. Bk. 15 , Pg. 106-110 Tract San Roque Park

City of Santa Barbara  
 Assessor's Map Bk, 053 -Pg, 31  
 County of Santa Barbara, Calif.

10/96 SBE changes to 37 & 44