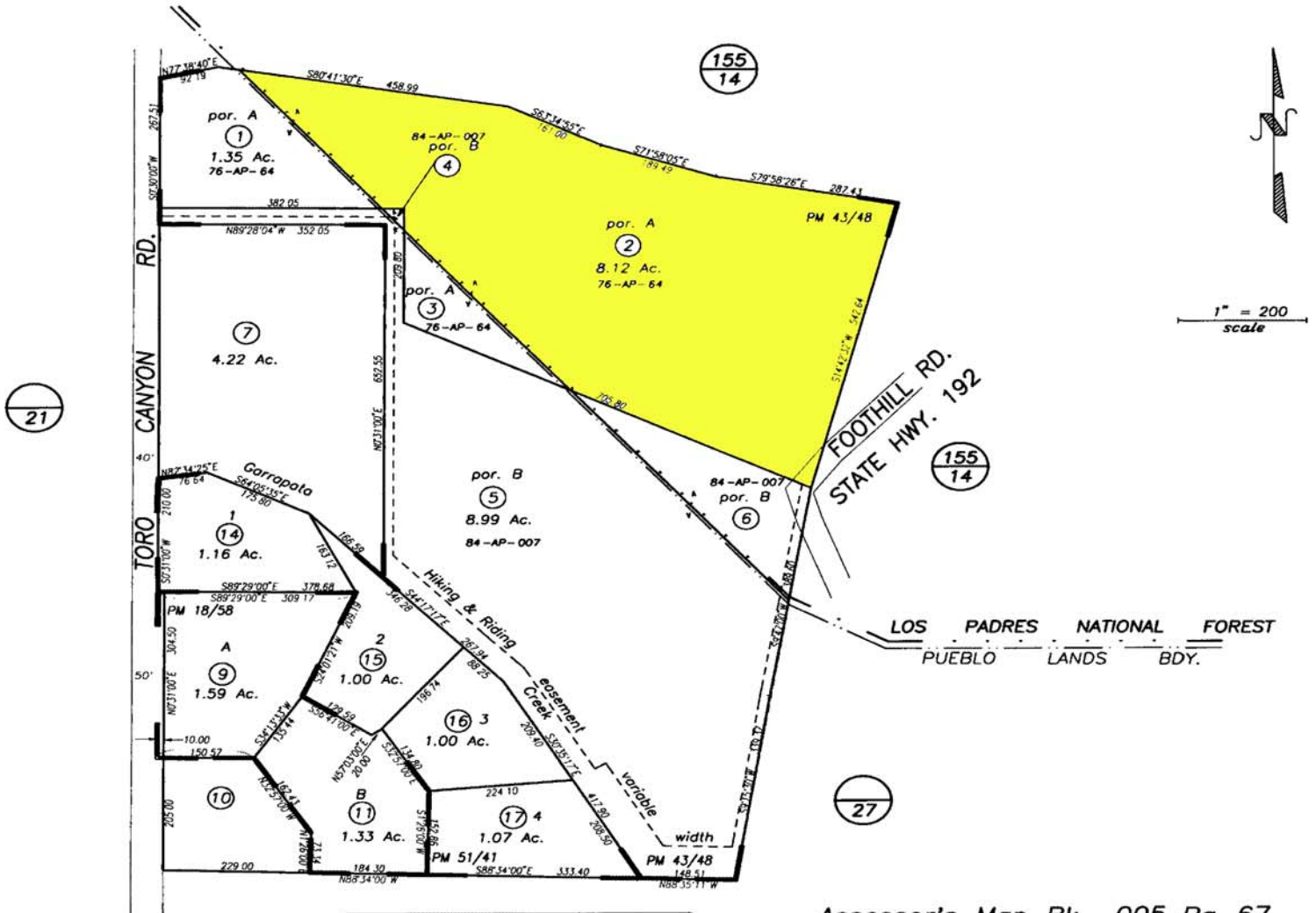


POR. PUEBLO LANDS

005-67



1" = 200
scale

NOTICE
Assessor's Parcels are for tax assessment purposes only and do not indicate either parcel legality or a valid building site.

Assessor's Map Bk, 005-Pg, 67
County of Santa Barbara, Calif.

LD/96 08 & 12 into 13
13 into 14-17