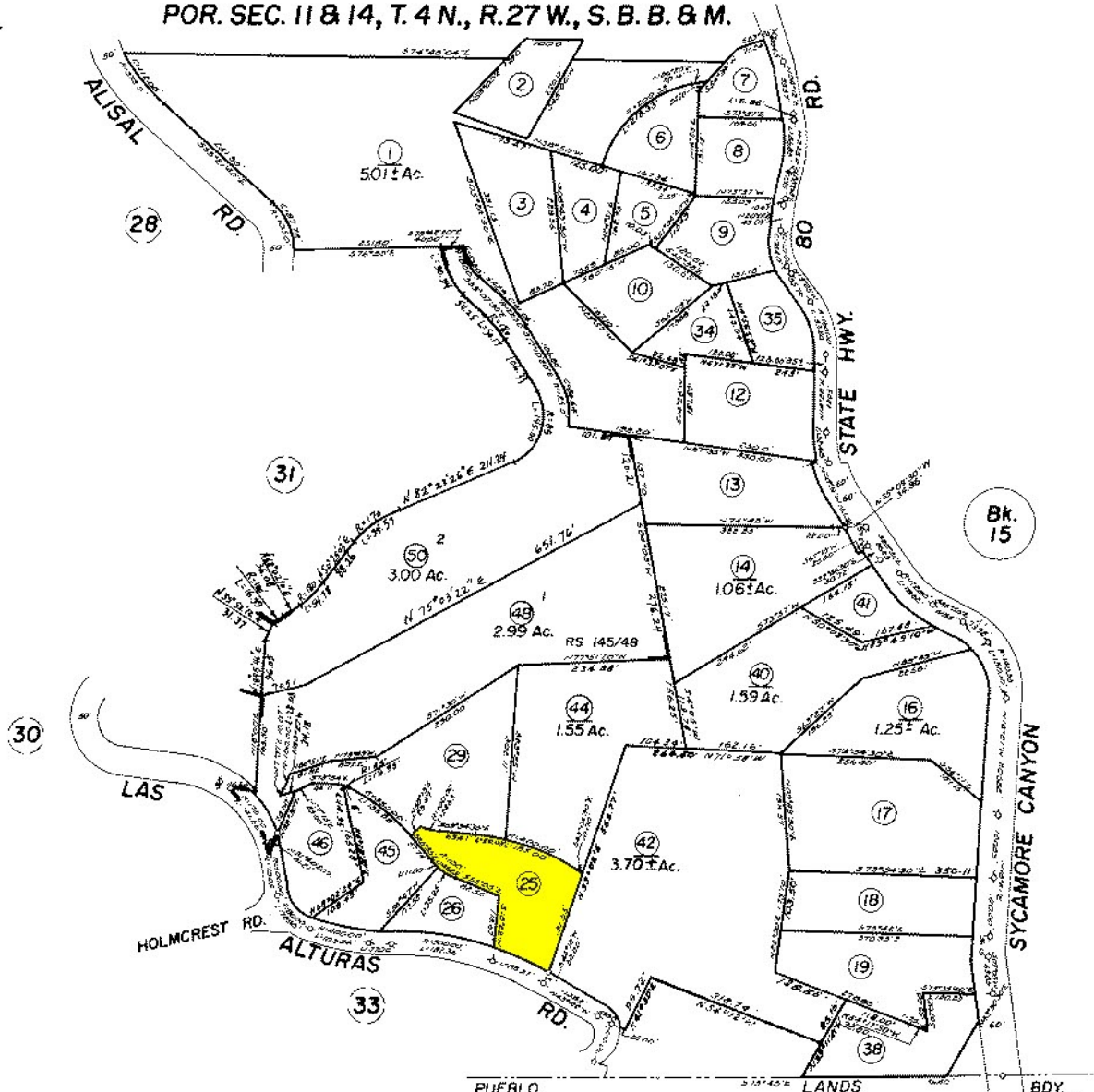


POR. SEC. 11 & 14, T. 4 N., R. 27 W., S. B. B. & M.

19-32



Bk. 15

Assessor's Map Bk. 19 - Pg. 32

County of Santa Barbara, Calif.

NOTE - Assessor's Block Numbers Shown in Ellipses  
Assessor's Parcel Numbers Shown in Circles.

6/93

28 + 31 + 312-16 1470 47  
49 1470 48 + 49  
311-23 + 49 1470 50