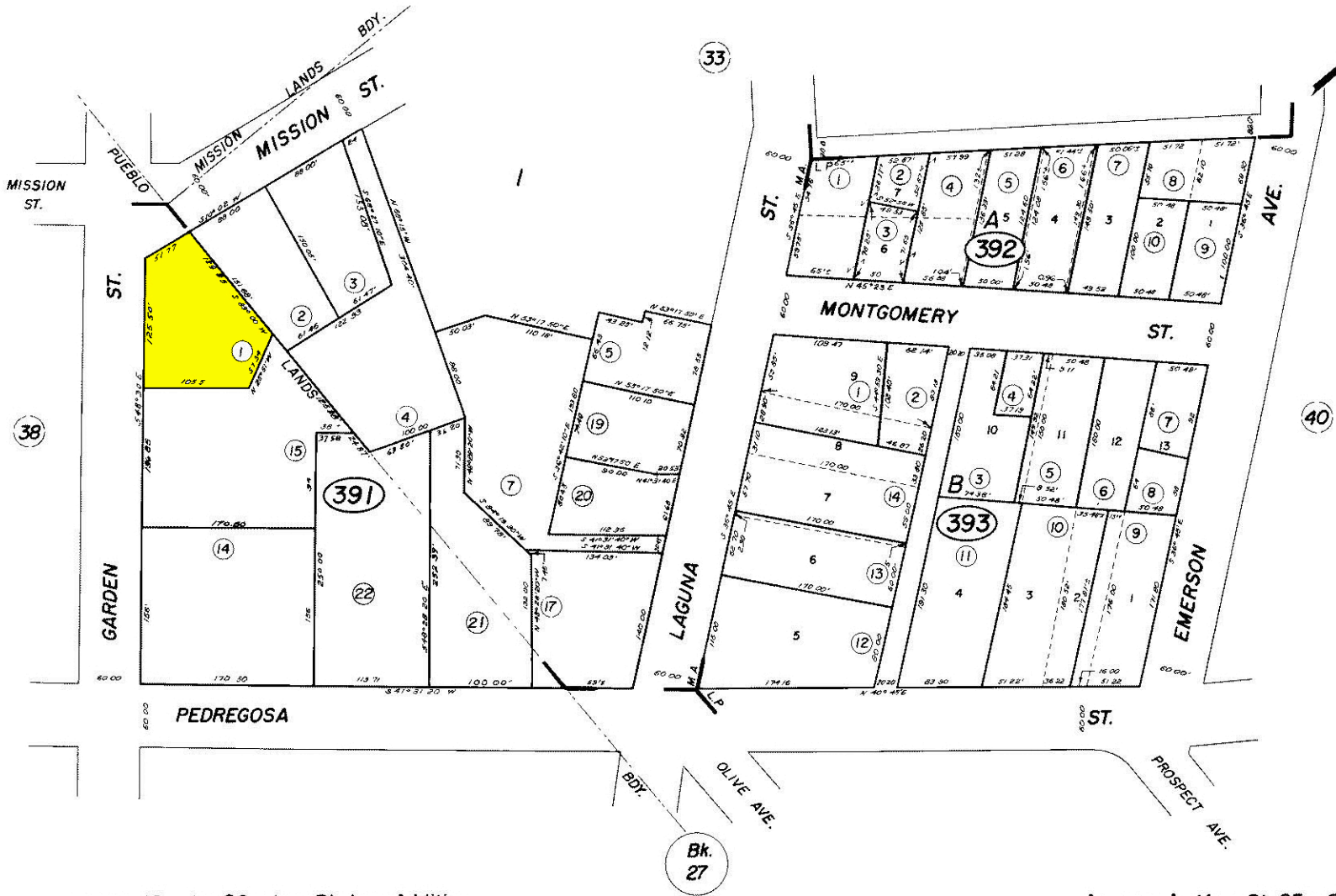


POR. SEC. 16 T. 4N., R. 27W., S.B.B. & M.
& PUEBLO LANDS

25-39



R. M. Bk. 16 , Pg. 26 - Las Piedras Addition
R. M. Bk. , Pg. -Mission Addition

Assessor's Map Bk. 25 - Pg. 39
County of Santa Barbara, Calif.

NOTE - Assessor's Block Numbers Shown in Ellipses
Assessor's Parcel Numbers Shown in Circles

5/85