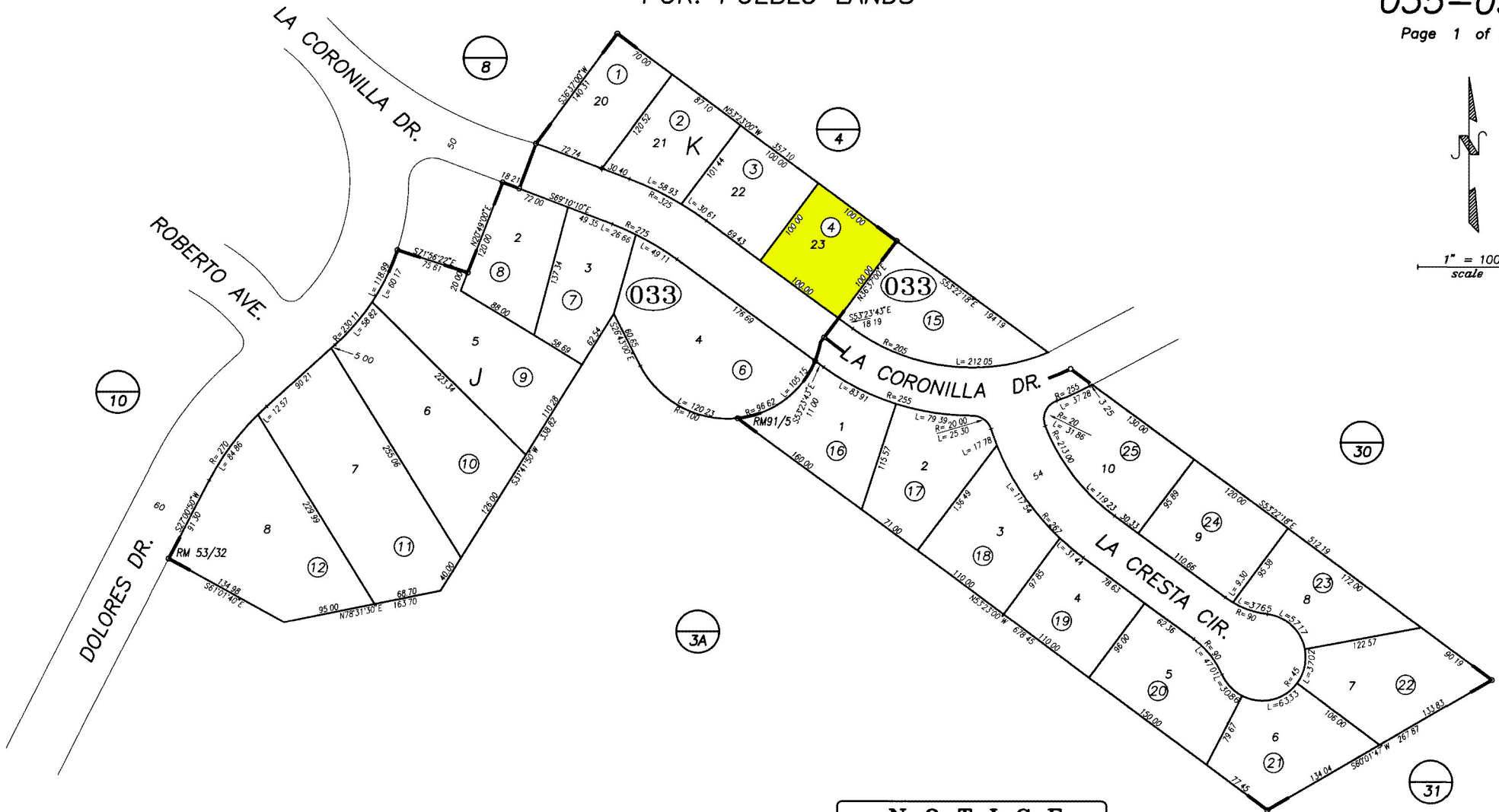
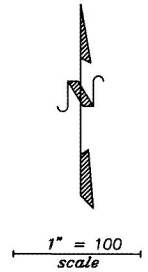


POR. PUEBLO LANDS

035-03

Page 1 of 2



NOTICE
Assessor Parcels are for tax assessment purposes only and do not indicate either parcel legality or a valid building site.

City of Santa Barbara
Assessor's Map Bk, 035-Pg, 03
County of Santa Barbara, Calif.

05/13/1974 R.M. Bk. 91 , Pg. 5-6 , Tract La Cresta Estates
02/26/1960 R.M. Bk. 53 , Pg. 32-33 , Tract La Coronilla Tract #4

07/99 032-01 into 040-37