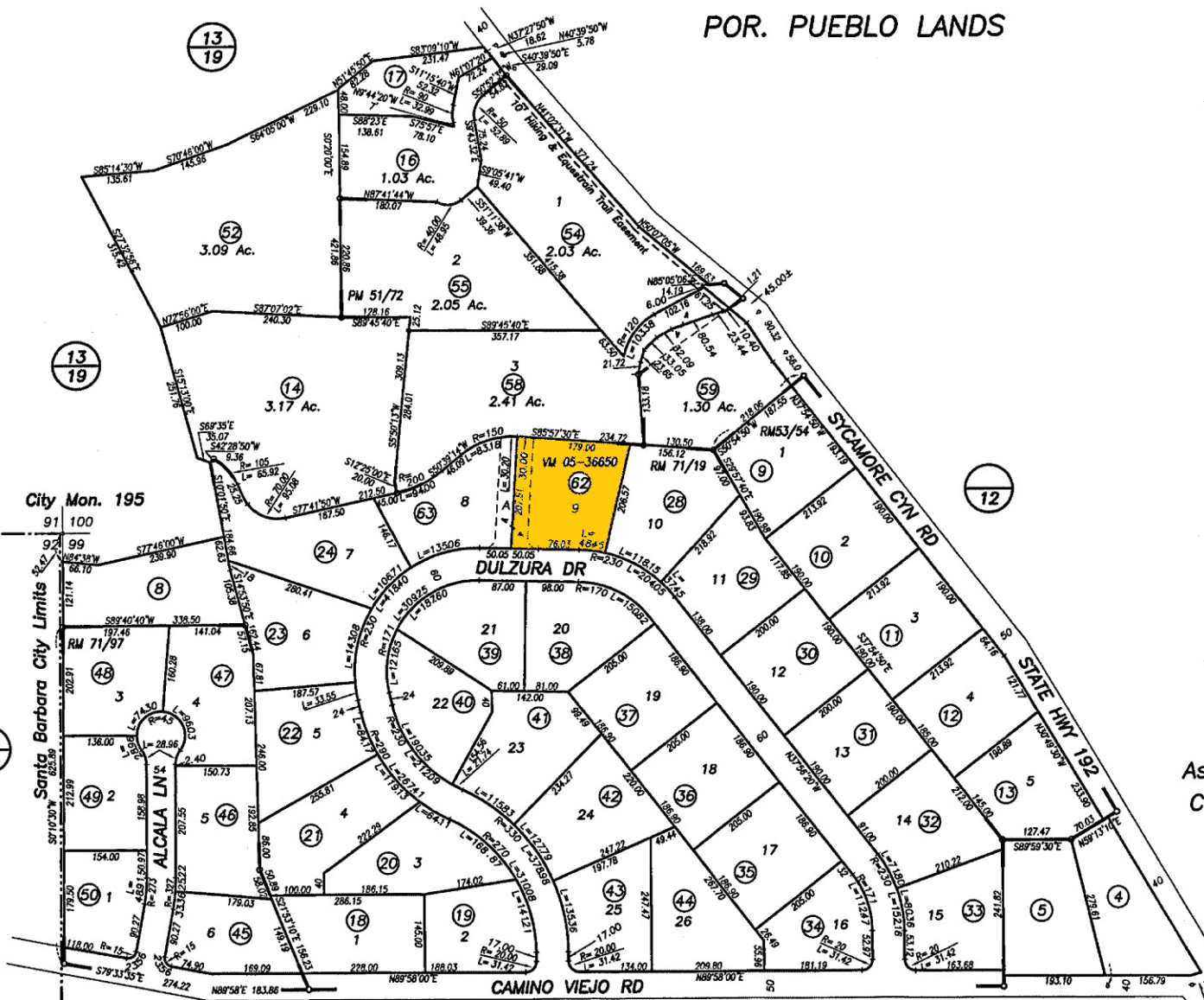




1" = 200
scale



NOTICE
Assessor Parcels are for tax assessment purposes only and do not indicate either parcel legality or a valid building site.

Assessor's Map Bk, 011-Pg, 16
County of Santa Barbara, Calif.

04/16/1963 R.M. Bk. 71 , Pg. 19-22 , Tract 10,171
03/30/1960 R.M. Bk. 53 , Pg. 54 , Tract 10,085
07/23/1963 R.M. Bk. 71 , Pg. 97 , Tract 10,246