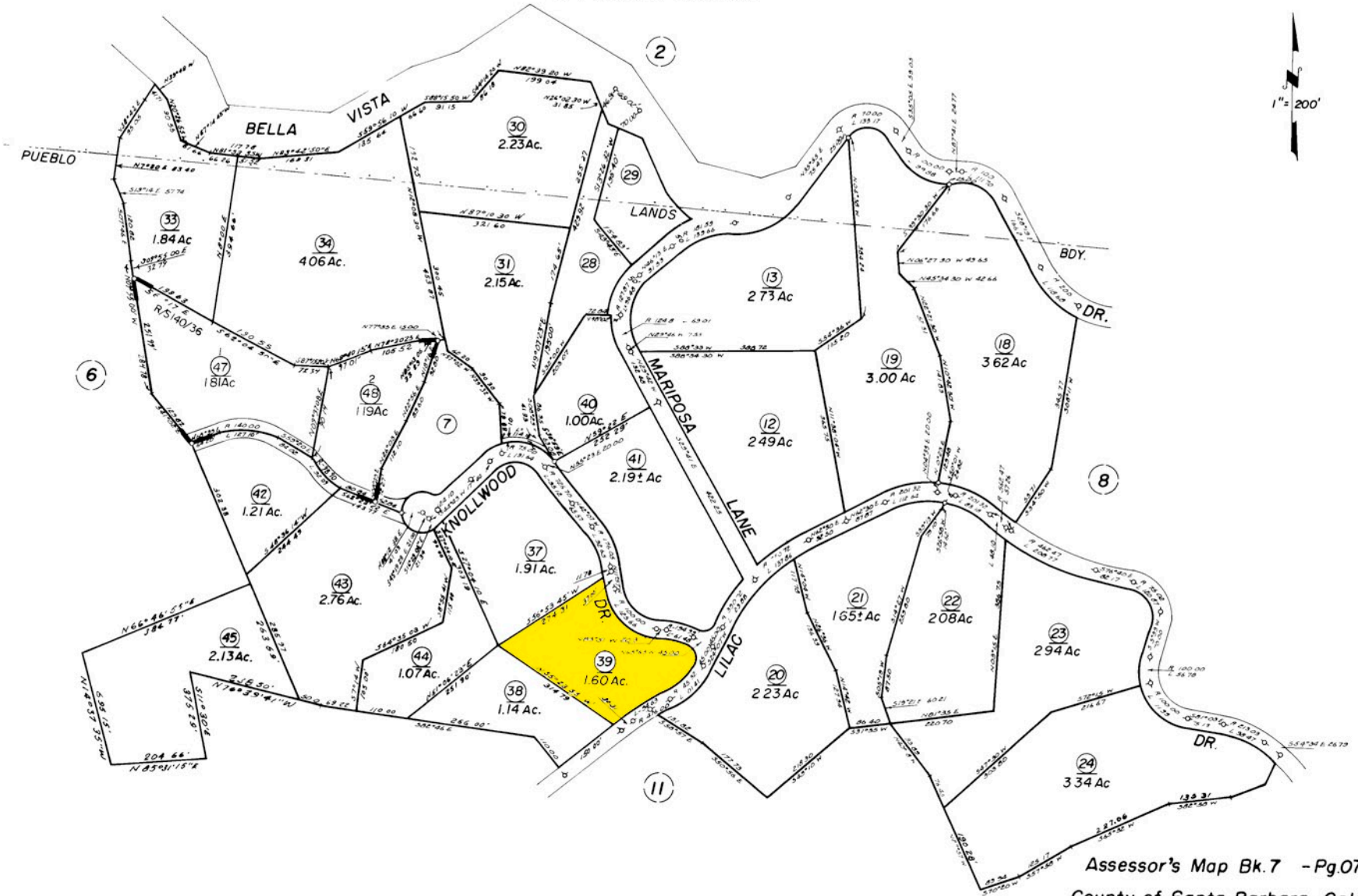
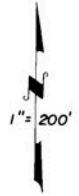


POR. N E ¼ SEC. 9, T.4 N., R. 26 W., S.B.B. & M.
& PUEBLO LANDS

7-07



Assessor's Map Bk.7 -Pg.07
County of Santa Barbara, Calif.

NOTE - Assessor's Block Numbers Shown in Ellipses
Assessor's Parcel Numbers Shown in Circles

5/89 30x35 1/4th 46
46 1/4th 47x48