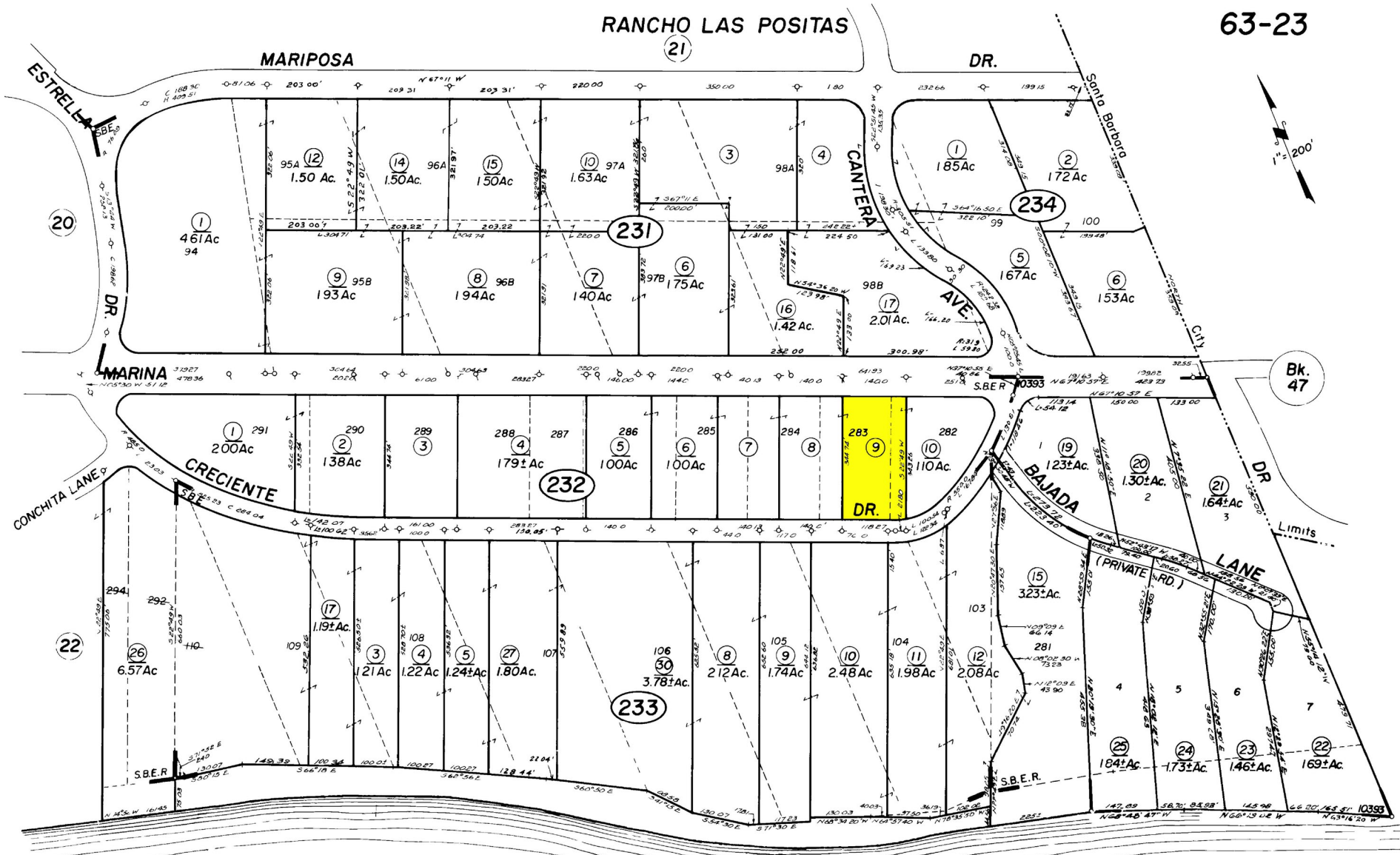


RANCHO LAS POSITAS



Bk. 47

Limits

LD/82

This map/plat is being furnished as an aid in locating the herein described Land in relation to adjoining streets, natural boundaries and other land, and is not a survey of the land depicted. Except to the extent a policy of title insurance is expressly modified by endorsement, if any, the Company does not insure dimensions, distances, location of easements, acreage or other matters shown thereon.

**PACIFIC OCEAN**  
 5/18/24 R.M. Bk.15, Pg. 51 - 56 Santa Barbara Estates  
 9/4/28 R.M. Bk.15, Pg.189-201 Santa Barbara Estates (Resubdivision)  
 9/14/65 R.M. Bk. 74, Pg. 31 - Tract 10393

NOTE-RECORD TITLE ALONG SHORE OF PACIFIC OCEAN SHALL BE CONSTRUCTED TO REACH MEAN HIGH WATER. BOARD OF SUPERVISORS MINUTES 9/2/30, BK 3, PG 390

NOTE - Assessor's Block Numbers Shown in Ellipses  
 Assessor's Parcel Numbers Shown in Circles

Assessor's Map Bk.63 - Pg.23  
 County of Santa Barbara, Calif.