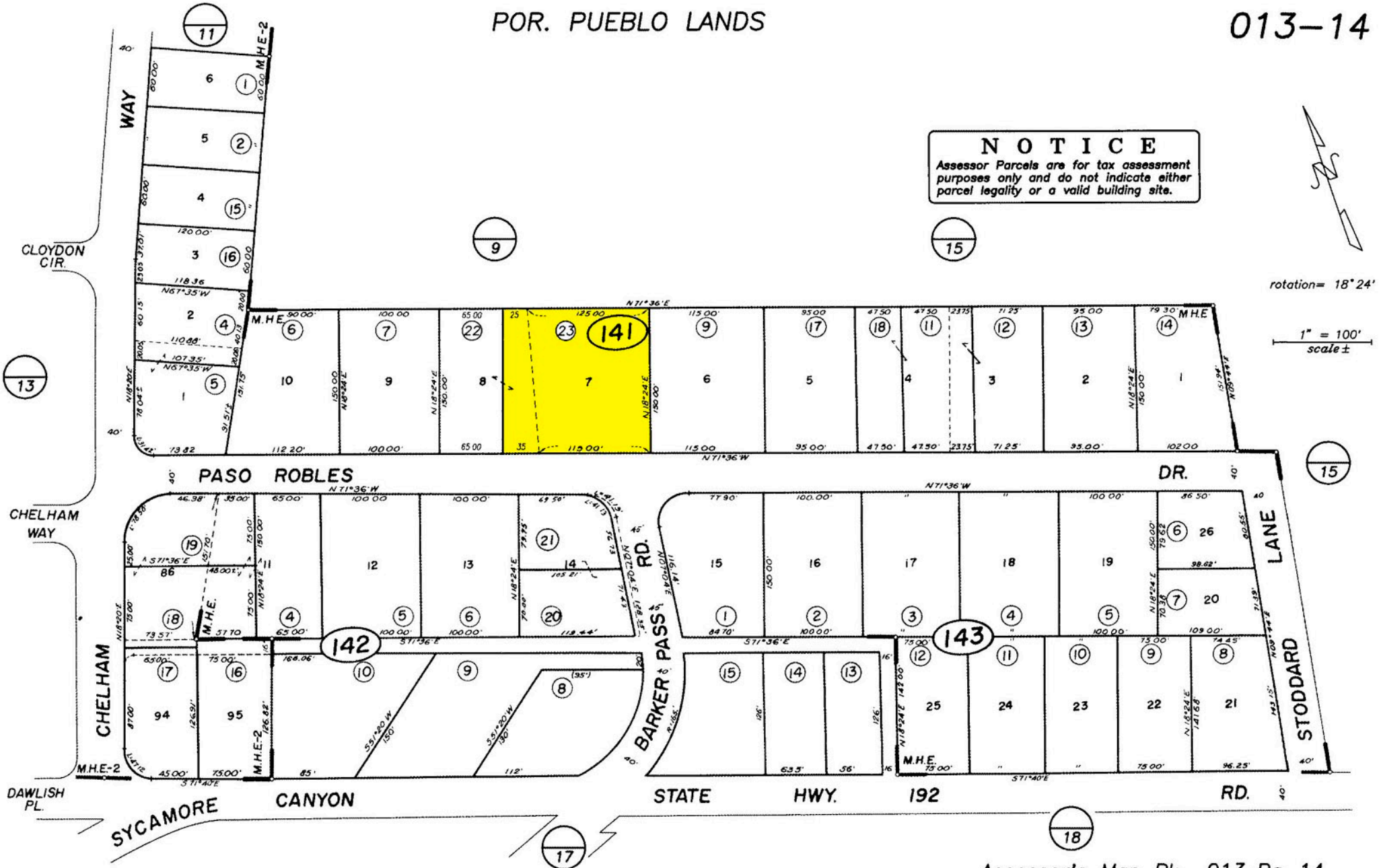


**NOTICE**  
Assessor Parcels are for tax assessment purposes only and do not indicate either parcel legality or a valid building site.



rotation = 18° 24'

1" = 100'  
scale ±



Assessor's Map Bk, 013-Pg, 14  
County of Santa Barbara, Calif.

9/05/1929 R.M. Bk. 15 , Pg. 209 , Tract Montecito Home Estates No.2  
2/16/1926 R.M. Bk. 15 , Pg. 96 , Tract Montecito Home Estates

LD/00 141-19&20 into 141-22&23 LLA